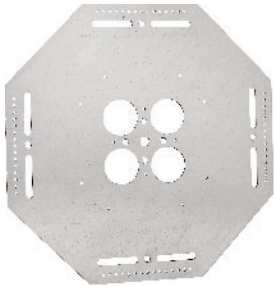
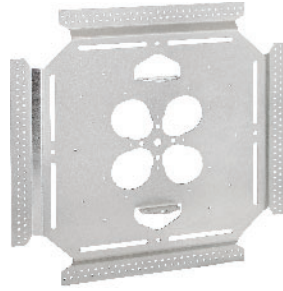


Box & Conduit Hanger Support Plates | Pg. P20, B4, F26

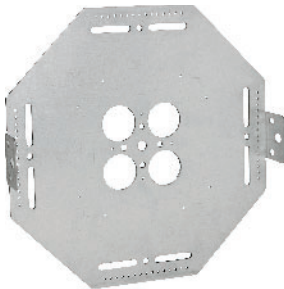
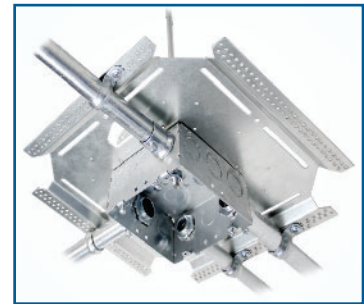
PATENTED



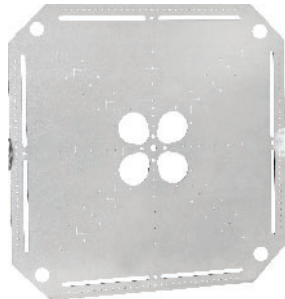
BCHS-10



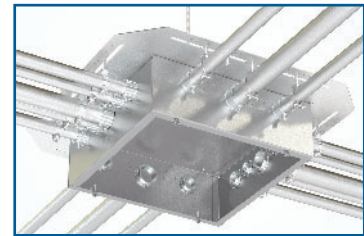
BCHS-8S



BCHS-6



BCHS-12



HANG BOXES & CONDUITS WITH ONLY ONE POINT OF ATTACHMENT!

Hang boxes and conduits with only one plate and rod! Replace traditional methods of suspended conduit installations with the Box & Conduit Hanger Support Plates (BCHS). Use one piece of all-thread and one plate to support multiple conduits instead of measuring and cutting multiple pieces of rod. The more pieces of conduit involved, the more saving the BCHS plates will provide.

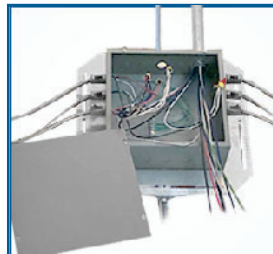
Specialty Enclosures | Pg. P26, B3



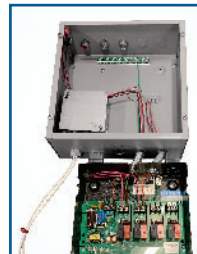
12124-50 NEW



12124-850 NEW



Shown installed to BCHS-12, MC cables connected to 1/2" K.O.s



Shown fabricated to lighting panel, used as pull box



Shown fabricated with pre-wired lighting relay devices, ready-to-install

ELIMINATE NEED TO MANUALLY PUNCH K.O.'S

Developed through contractor demand, the 12124-50 & 12124-850 are NEMA 1 enclosures ideal for Lighting Controls or "Home Runs". The 12124-50 features twenty 1/2" side K.O.s, whereas the 12124-850 has thirty-two 1/2" side K.O.s. Both models have a 1" to 1-1/4" C.K.O. on the back. Pairs well with BCHS-12 Plate.