

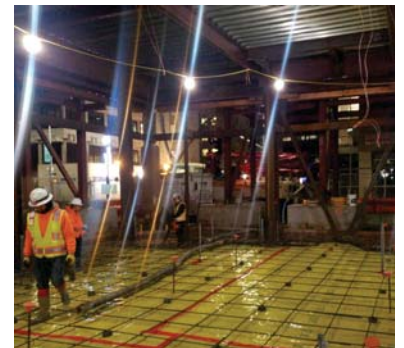
## AWC-LUHB5 & AWC-LLHB4 High Bay Light | Pg. H8-H9



The Round "UFO" and Linear LED High Bay Light Fixtures are perfect for indoor locations with high ceilings, such as open factory floors, transit stations, big box stores, and exhibition halls. All models have ADJUSTABLE COLOR TEMPERATURE (CCT) and ADJUSTABLE WATTAGE settings. Additionally, both high bay lights are compatible with a motion sensor (sold separately). These lights are designed to operate in a wide temperature range, from -40°F to 122°F for UFO High Bay and from -30°F to 122°F for Linear High Bay\*. UL and DLC Premium Listed.

\* Please refer to the installation instructions for more detailed information.

## LTL Temporary Light Fixture | Pg. H10



The Temporary LED Work Light is an energy-efficient, re-usable solution for indoor construction job sites. Ideal for replacing hot, energy-draining work lights and messy string lights. LTL Series comes in 60W, 100W, and 150W packages, and includes stainless steel lamp cage and retractable mounting hook. It also includes a 10ft cord with male plug; and a 3-prong female outlet, concealed by sliding cover plate. Cord and outlet set allows LTL Series to daisy-chain together as "string lights" (up to 900W total load). Operates in temperatures from -40°F to 140°F. Options include 5' tall, collapsible Tripod Stand; and Floor Stand Bracket. UL Listed for Damp Locations (IP63).