

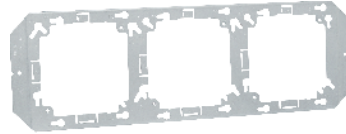
FIXED MOUNTING BRACKET

PRODUCT FEATURES

- ▶ Compatible with 4", 4-11/16" and 5" sq. boxes
- ▶ Unique key-hole patterns allow boxes to be turned 90°
- ▶ Compatible w/ Standard & Adj. Rings mounted vertically or horizontally
- ▶ Use 4" rings on any size box. Can be mounted on their own for low voltage applications using 8/32 screws
- ▶ Bendable box latch tabs temporarily hold 4" or 4-11/16" sq. boxes in place without needing to tighten box screws until final ring or cover installation
- ▶ Low profile design limits drywall bulging

Cat. No.	Description	Std. Pkg.
FMB-16	Fixed Position Box Mounting Bracket for 3 Boxes on 16" Studs	25
FMB-24	Fixed Position Box Mounting Bracket for 4 Boxes on 24" Studs	25

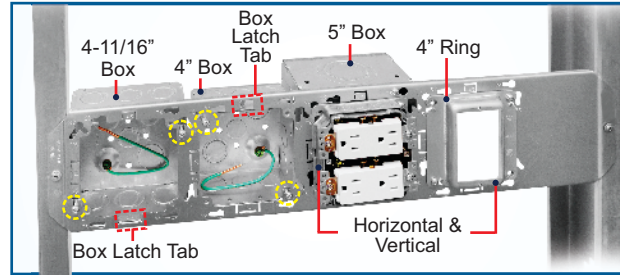
Compatible with 5" Sq. Boxes!



FMB-16

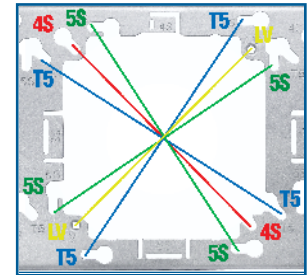


FMB-24



FMB INSTALLED ON STUDS

Mount up to 3 boxes between 16" studs with FMB-16 and 4 boxes between 24" with FMB-24



MOUNTING HOLES

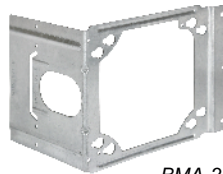
Compatible with 4", 4-11/16" and 5" square boxes (Box can be turned 90°)

BOX MOUNTING ADAPTERS

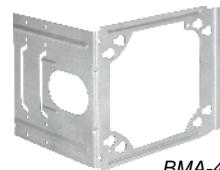
PRODUCT FEATURES

- ▶ Mounts to 4" and 4-11/16" square boxes
- ▶ Adjustable Back Support helps maintain rigidity when installed
- ▶ Low profile design limits drywall bulging
- ▶ For use with metal or wood studs
- ▶ 4" Ring can be mounted without box for low voltage applications with #8-32 screws

Cat. No.	Description	Std. Pkg.
BMA-23	Box Mounting Adapter with up to 3-1/2" Far Side Support	25
BMA-4	Box Mounting Adapter with up to 4" Far Side Support	25
FS-456-EXT	Far-side Support Extender for up to 6" Studs, Compatible with BMA-23 & BMA-4, tool-less	50



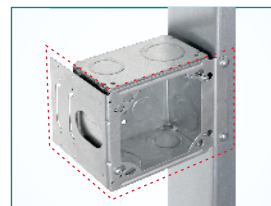
BMA-23



BMA-4

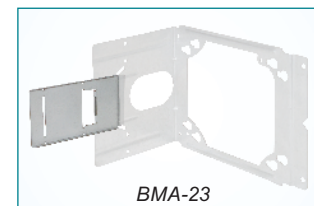


FS-456-EXT



DIRECT-TO-STUD

BMA mounts boxes direct-to-stud



BMA-23

Fold FS-456-EXT onto BMA's for up to 6" far-side support

STEEL BACK SUPPORTS

PRODUCT FEATURES

- ▶ Electroplated Zinc

Cat. No.	Description	Std. Pkg.
ABS	Far-Side Box Support for 1-1/2" & 2-1/8" deep boxes, for use with 4" metal studs	50
ABS-6	Far-Side Box Support for 1-1/2" & 2-1/8" deep boxes, for use with 6" metal studs	50



ABS



ABS-6

